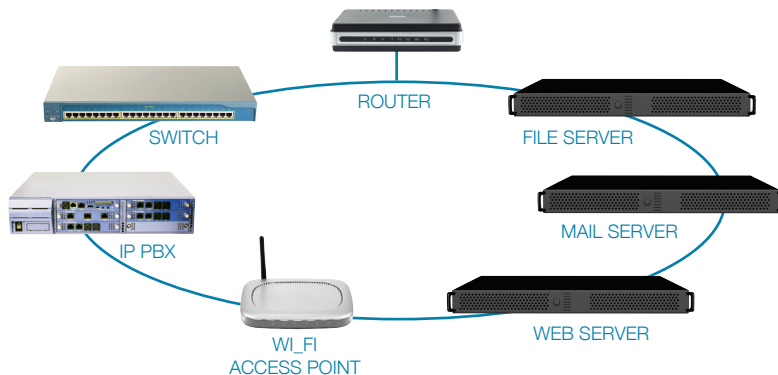


An All-in-One IT Solution for the Small Business

Which do you think makes more sense?

Conventional solutions require many components integrated together and more components means more purchases, more vendors, more chances of failure and more possible incompatibilities...whereas the SUTUS solution is a single integrated unit.



More than just a phone system, the BC200 integrates all of the essential IT and communications tools a small business needs. Designed as a single appliance the BC200 includes: phone system, file server, email server, router, firewall, wireless access point, VPN remote access server, automated backups, VoIP and Standard phone line support and more.

Mobility

The Business Central 200 allows you to be in your office regardless of where you are. The VPN capability means that no matter where you are – your home office, the cottage, a hotel or at a remote branch office – you have transparent access to your phone, email, files and workspaces.

- **Work when and where you need;** Secure VPN means that anywhere you have an internet connection you can work as if you were located in the office.
- **Reach Me Outside™;** Sophisticated call forwarding means that even when you're not available, the system can forward your extension to a cell phone, home phone or any other number before passing it to voicemail.
- **WiFi in the office;** Easy to set up WiFi means that your office can be free of ethernet drops for workers who need to move around.
- **WiFi Phone Support (Polycom WiFi Phones);** Now you can have all the advantages of an IP/VoIP phone in a portable format.
- **Webmail;** Access your email through the web.
- **Email on Blackberry's, iPhones, Smartphones and other devices;** the industry standard IMAP email server makes it easy to configure and use mobile email devices.

Flexibility

You should be able to decide how your technology supports your business. The BC200 has many functions that can be used right away or as your business changes. Use what you need, when you need it.

- **Email server that works with all standard software applications and mobile devices**
- **Firewall with built-in VPN access services**
- **Secure Wireless networking**
- **Use both VoIP and regular phone lines as you need;** We support both VoIP and standard phone lines, allowing you to choose how you want to connect your phone system to the outside world.
- **Voicemail to email**
- **Remote phones for home offices and soft phones with the headset plugged into computers;** allowing you to utilize your computer as an IP phone.

The BC200 is easy to use and many features can be managed on your own or through your SUTUS certified reseller.

Reliability

As the old saying goes “An ounce of prevention is worth a pound of cure.” The Sutus BC200 has been built from the ground up with business grade components and designed with reliability as a key feature

- **Fully integrated hardware and software** – no hardware or software conflicts between components resulting in more reliability. The all-in-one advantage
- **Error correcting memory;** increases system stability
- **Dual hard drives that are mirrored to deliver redundant storage and operation;** reducing the risk of downtime.
- **Regularly scheduled back-up of your data between the drives.**
- **Replaceable hard drives;** easy to swap out for new drives.
- **Proactive status and health monitoring;** detect problems before they happen
- **Immediate remote support through a browser;** (and on site if needed)
- **Built-in Quality of Service on the LAN and on the WAN;** ensuring voice quality is the best it can be
- **Standard 1 year warranty and a 30-day money back guarantee.**

Efficiency

The BC200 gives you Enterprise capabilities without Enterprise cost or effort. The built in Auto Attendant provides the ability to direct callers to the appropriate extension, and enables them to dial by name to reach employees.

- **Collaboration;** The unique ‘Workspace’ tools allow your employees to easily share files, voicemail and phone extensions.
- **Automatic Phone Configuration;** Polycom IP Phones are automatically configured when plugged into the system - saving time and money
- **Program your phone through a web interface;** Everyday tasks such as configuring speed dial or setting forwarding are accomplished easily using a web interface
- **Only One Technology Vendor;** work with a single partner instead of dealing with “the phone people”, “the computer people” and the “network people”
- **Easy system administration;** Whether yourself or your technology vendor, all administration can be done remotely and with a web browser - moving extensions, adding new employees or changing extensions can all be done with a few clicks of the mouse.

Security

IT security is often complicated, confusing and filled with jargon. Implementing a custom solution from multiple products opens up multiple security vulnerabilities, each with their own interfaces, protocols, and configuration options. Ensuring that each device is secure and that there are no security holes in their integration is both time consuming and costly to setup.

- **No need to worry about updating the system, SUTUS does that for you;** Security updates are automatically delivered immediately to your system without requiring someone to be onsite and are installed when you want them installed.
- **Easy to change roles or remove users;** You can quickly shut down ex-employees to protect your data or add and remove contractors quickly providing you with a secure but flexible environment.
- **Proven, Enterprise level security standards used throughout the system;** IMAP, SMTP, HTTP. Secure 128 bit SSL, IPsec VPN, PPTP VPN, WPA2, Enforced authentication.

Price and Value

More affordable than purchasing components separately, the BC200 is a single appliance that dramatically reduces the total cost of ownership including purchase, training, support, ongoing maintenance, and upgrade costs.

- **Less expensive to purchase;** as low as \$2,200 and up to 50% less than the cost of purchasing the components independently.
- **Less expensive to setup;** no-one else has our patented workspace tools that eliminate the complicated setup, integration and configuration normally required to deliver all these features.
- **Less expensive to manage and support;** Add/edit new employees right from a browser; redirect calls and call flows to other extensions or external numbers from a drop down list with ‘Reach me Outside’; or manage all your functionality from any location with the built in remote management functionality using the same patented Workspaces.
- **Lower telephone costs;** leverage the benefits of VoIP and get free calling between your remote workers and home office with remote phones and soft phones, work with one of our VoIP Partners and add additional capacity or get multiple phone numbers to your desk and more.
- **Longer Life;** robustness, health monitoring, remote management, extended warranty, recovery agent, service watchdogs and critical service restart all work in parallel to give you a well backed and supported solution.