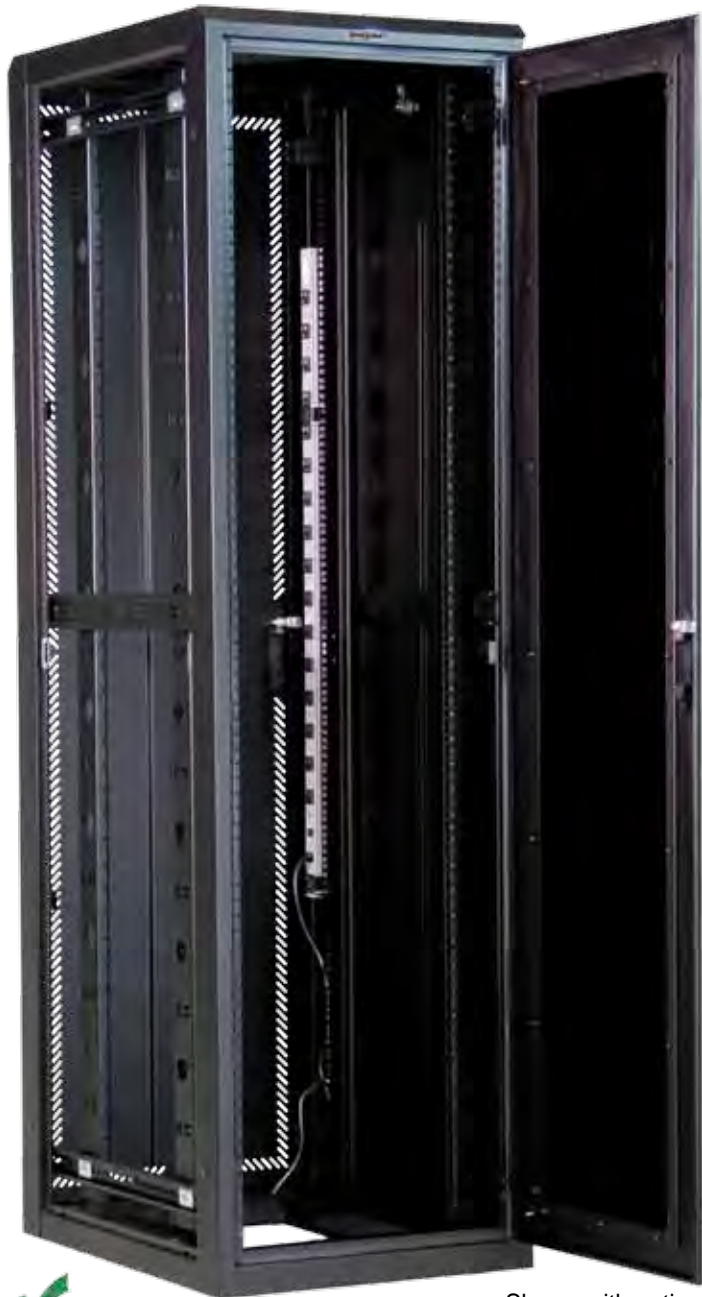


# E GL840E-2432 SERIES



**DIMENSIONS:** 84"H x 24"W x 32"D

Maximum rail placement and usable inside depth: 30"

**RACK SPACES:** 44 RMU • 19" EIA 310-D Compliant

**STOCK COLORS:** Black, Advantage White, or Nitro Blue

**WEIGHT CAPACITY:**

1500 lbs. on levelers, bolted to floor, or on heavy duty casters

**SHIPPING WEIGHT AND PALLET SIZE:**

350 lbs./90"H x 32"W x 38"D

**GL840E-2432P COMPLETE ENCLOSURE  
INCLUDES PARTS BELOW**

PART NO.	DESCRIPTION
8401E-2432	Frame with two pairs of black powder coated, universal 19" M6 mounting rails (with RMU markings) and package of M6 hardware
7209-N	One Set of 4 Adjustable Levelers (2.5"H)
TPE-24P	Removable Vented Top Panel with two 4" horseshoe knockouts
8402E-24	Plexiglas Front Door with locking swing handle
8404E-24	Perimeter Vented Steel Rear Door with locking swing handle
8410-32ELS	Pair of Solid Lift-off Side Panels with lock and finger release latches
7215	16 position, 15 amp Power Strip; 5-15R receptacle and 5-15P plug

#### ADDITIONAL CONFIGURATIONS

GL840E-2432F	Complete enclosure with TPE-24F (top panel with three 75 CFM fans)
GL840E-2432F10	Complete enclosure with TPE-24F10 (top panel with one 10", 550 CFM fan)
GL840E-2432S	Complete enclosure with TPE-24S solid top

Shown with optional accessories,  
drawings can be found on page 138



**PART NO. DESCRIPTION**

**DOORS & SIDE PANELS**

8402E-24PV	Perimeter Vented Plexiglas Door
8403E-24	Solid Door
8402E-M24	Mesh Steel Door
8411-32ELL	Pair of Locking Lift-off Vented Side Panels

*Additional Doors, pages 100-103*

**TOP & BOTTOM PANELS**

TPE-24F	Top Panel and Fan Assembly with two 4" horseshoe knockouts
TPE-24F10	Top Panel and Fan Assembly with one 10", 550 CFM fan
BPF24	Bottom Panel (Filtered), 13"W x 16"D; includes rear solid panel
BPS24	Bottom Panel (Solid), 13"W x 16"D; includes rear solid panel

*Additional Top and Bottom Panels, pages 107-108*

**CABLE MANAGEMENT**

VLB-8432	Vertical Lacing Bar Kit (includes 1 vertical bar, 2 horizontal bars and 6 cinch straps)
HLB-32	Horizontal Lacing Bar for 32"D enclosure
VLB-84	Vertical Lacing Bar for 84"H enclosure (includes 6 cinch straps)
ESC-K12	Cable Management Rail Kit for front or rear rails; includes 12 sections of "fingers" (each section 7 RMU); rails will need to be recessed 4.5"

**19" RACK MOUNT CABLE MANAGEMENT**

CM-15	Double-sided Cable Organizer with plastic fingers and covers, 2 RMU
CM-16	Single-sided Cable Organizer with plastic fingers and covers, 1 RMU

*Additional Cable Management, pages 123-130*

**STATIONARY SHELVES FOR 19" MOUNTING**

7206-FR-AHD	Front/Rear Mount adjustable, 17.5"W x 22.25"D, 200 lb. weight capacity
7206-FR-ADHD	Front/Rear Mount adjustable, 17.5"W x 27.25"D, 150 lb. weight capacity
7206-FR-A28HD	Front/Rear Mount adjustable, 17.5"W x 28"D, 300 lb. weight capacity

**SLIDING & SPECIALTY SHELVES FOR 19" MOUNTING**

7206-FRSL-AHD	Front/Rear Mount adjustable, 17.5"W x 22"D, 110 lb. weight capacity
7206-FRSL-ADHD	Front/Rear Mount adjustable, 17.5"W x 26"D, 110 lb. weight capacity
7206-MKM	Monitor/Keyboard/Mouse Shelf
7206-PKB-MT	Pivoting Keyboard Tray with Mouse Tray

*Additional Shelves, pages 110-111*

**POWER STRIPS, COPPER BUS BAR, & COOLING EQUIPMENT**

7215-S	16 position, 15 amp Power Strip (with surge suppressor); 5-15R receptacle and 5-15P plug
7215-20ARTLP	16 position, 20 amp Power Strip; 5-20R receptacle and L5-20P plug
7215-20AR	16 position, 20 amp Power Strip; 5-20R receptacle and 5-20P plug
CBB-72	Copper bus bar 70" (isolated)
7217FT-3	Fan Tray (Front/Rear Mount adjustable) with fan guards and three 75 CFM fans

*Additional Cooling Equipment, pages 117-122*

*Additional Power Strips, pages 114-116*

**MOUNTING RAILS, CASTERS & OTHER ACCESSORIES**

8405-ES1P	Pair of 19" EIA Mounting Rails with #10-32 tapped holes; includes hardware
8405-ES2P	Pair of 19" EIA Mounting Rails to accept M6 cage nuts; includes hardware
HDW-105-50	Package of 50 M6 cage nuts with screws (12mm screw length)
G101	Networking/Ganging Kit
AK101	Seismic Anchor Kit
AT2	Anti-tip Legs
7209-N4	One set of 4 Adjustable Levelers (4"H); (When using casters and levelers together, 4"H levelers are required)
7208-E	One set of 4 Casters, 2 locking and 2 non-locking
7208-EHD	One set of 4 Heavy Duty Casters, all locking (required for 1500 lb. weight capacity)