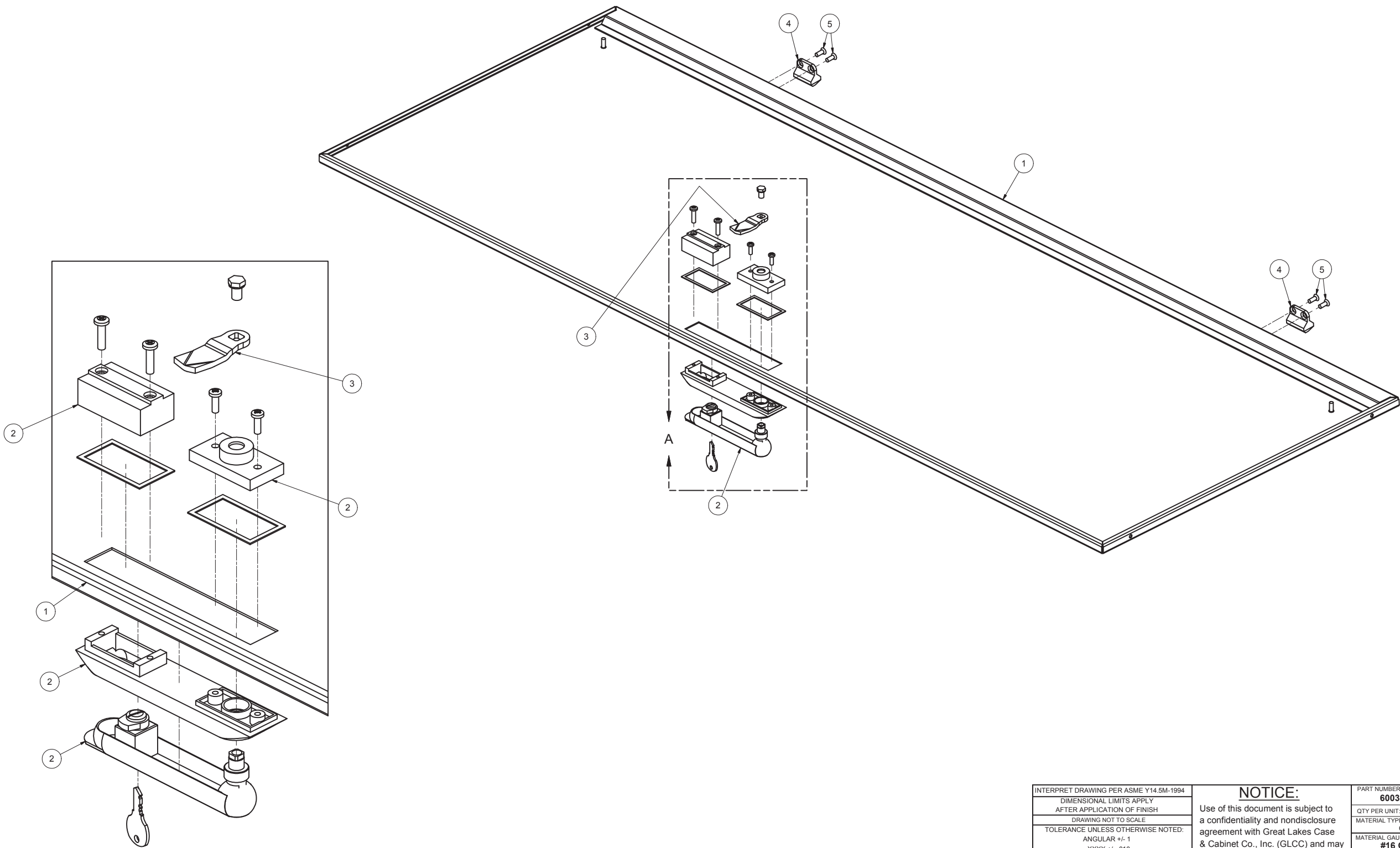


REVISION HISTORY			
REV	DESCRIPTION	DATE	APPROVED
0	ECO-01292	8/28/2003	WSS
1	ECO-02616	8/4/2009	FED
2	ECO-02822	3/23/2010	FED

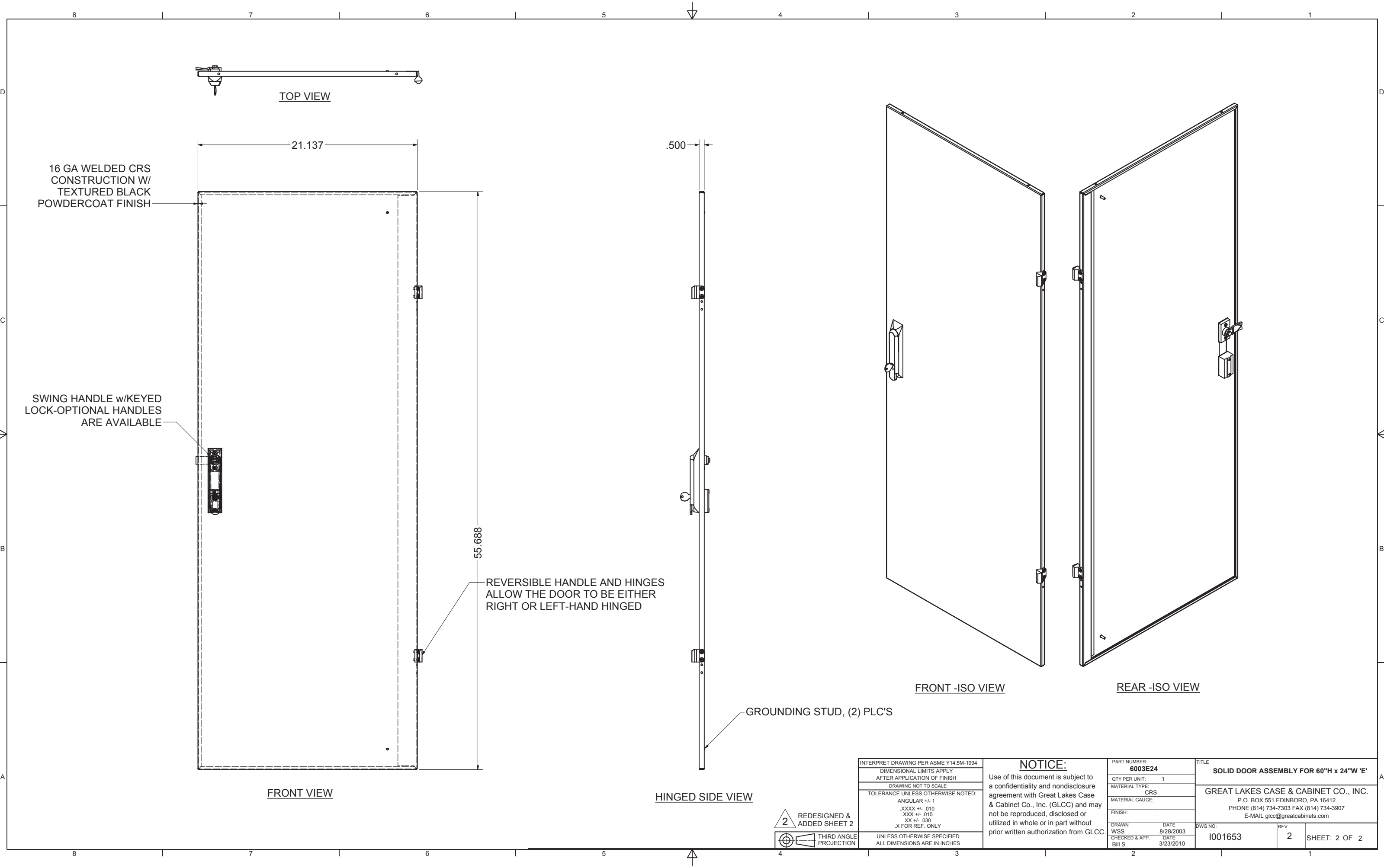
Bill of Material					
ITEM	PART NUMBER	STOCK NUMBER	QTY	DESCRIPTION	FILE NAME
1			1	SOLID STEEL DOOR FOR 60"H X 24"W 'E' - WELDMENT & DETAIL	I001654.iam
2	XHGLCC	H19-067	1	GLCC SWING HANDLE	XHGLCC NO CAM.iam
3	AA57711001	H17-005	1	SINGLE POINT CAM FOR XHGLCC	AA5771100.ipt
4	HINGEF	H20-023	2	HINGE GLCC - FEMALE	I000535.ipt
5	SCR1032X500FHBLK23	H01-156	4	SCREW, 10-32x1/2" PH FLAT TYPE 23 BLACK OXIDE/WAX RoHS	SCR1032X500FHBLK23.ipt



DETAIL A



INTERPRET DRAWING PER ASME Y14.5M-1994		<div>NOTICE:</div> <div>Use of this document is subject to a confidentiality and nondisclosure agreement with Great Lakes Case & Cabinet Co., Inc. (GLCC) and may not be reproduced, disclosed or utilized in whole or in part without prior written authorization from GLCC.</div>	PART NUMBER: 6003E24		TITLE SOLID DOOR ASSEMBLY FOR 60"H x 24"W 'E'	
DIMENSIONAL LIMITS APPLY AFTER APPLICATION OF FINISH			QTY PER UNIT: 1		GREAT LAKES CASE & CABINET CO., INC. P.O. BOX 551 EDINBORO, PA 16412 PHONE (814) 734-7303 FAX (814) 734-3907 E-MAIL glcc@greatcabinets.com	
DRAWING NOT TO SCALE			MATERIAL TYPE: CRS			
TOLERANCE UNLESS OTHERWISE NOTED: ANGULAR +/- .1 XXXX +/- .010 XXX +/- .015 XX +/- .030 .X FOR REF. ONLY			MATERIAL GAUGE: #16 GA			
			FINISH: -			
UNLESS OTHERWISE SPECIFIED ALL DIMENSIONS ARE IN INCHES			DRAWN WSS DATE 8/28/2003		DWG NO: I001653	REV 2
		CHECKED & APP. CA DATE 8/28/2003		SHEET: 1 OF 2		



2

REDESIGNED & ADDED SHEET 2

THIRD ANGLE PROJECTION

INTERPRET DRAWING PER ASME Y14.5M-1994		<div>NOTICE:</div> <div>Use of this document is subject to a confidentiality and nondisclosure agreement with Great Lakes Case & Cabinet Co., Inc. (GLCC) and may not be reproduced, disclosed or utilized in whole or in part without prior written authorization from GLCC.</div>		<div>PART NUMBER: 6003E24</div> <div>QTY PER UNIT: 1</div> <div>MATERIAL TYPE: CRS</div> <div>MATERIAL GAUGE:</div> <div>FINISH: -</div> <div>DRAWN DATE WSS 8/28/2003</div> <div>CHECKED & APP. DATE Bill S 3/23/2010</div>		<div>TITLE SOLID DOOR ASSEMBLY FOR 60"H x 24"W 'E'</div> <div>GREAT LAKES CASE & CABINET CO., INC. P.O. BOX 551 EDINBORO, PA 16412 PHONE (814) 734-7303 FAX (814) 734-3907 E-MAIL glcc@greatcabinets.com</div> <div>DWG NO: 1001653</div> <div>REV 2</div> <div>SHEET: 2 OF 2</div>	
<div>DIMENSIONAL LIMITS APPLY AFTER APPLICATION OF FINISH</div> <div>DRAWING NOT TO SCALE</div> <div>TOLERANCE UNLESS OTHERWISE NOTED: ANGULAR +/- .1 .XXXX +/- .010 .XXX +/- .015 .XX +/- .030 X FOR REF. ONLY</div> <div>UNLESS OTHERWISE SPECIFIED ALL DIMENSIONS ARE IN INCHES</div>							