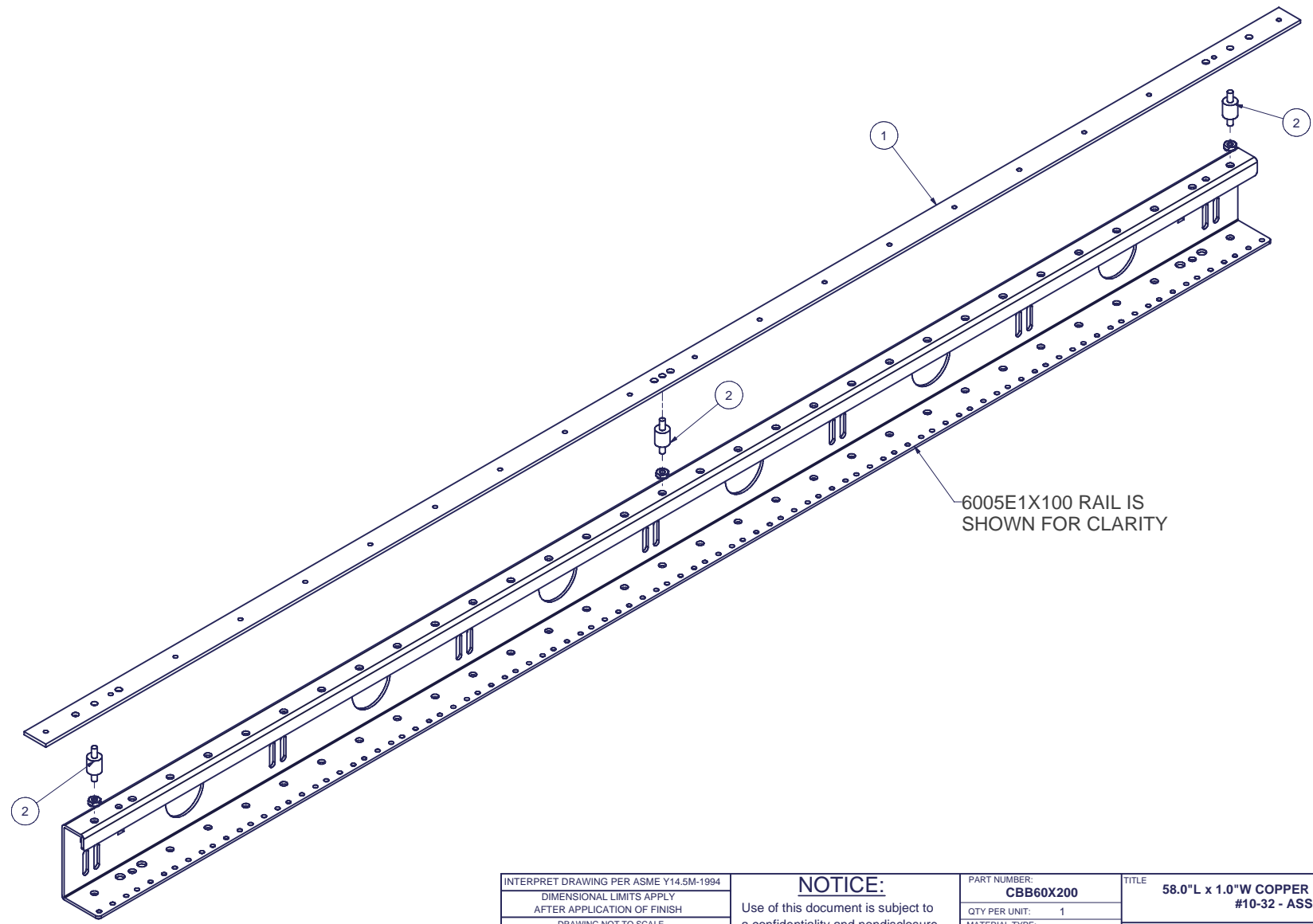


REVISION HISTORY			
REV	DESCRIPTION	DATE	APPROVED
2	ECO-01636	9/22/2005	JL
3	ECO-02431	11/14/08	CD

Bill of Material					
ITEM	PART NUMBER	QTY	DESCRIPTION	FILE NAME	REV
1	CBB60X100	1	58.00"L x 1.00"W COPPER BUS BAR, TAPPED #10-32 - DETAIL	1003467.ipt	6
2	QM-7	3	ISOLATED STANDOFF - RICHCO QUIET MOUNT	QM7.ipt	-
3	H02-001	6	#10-32 KEPS NUT, ZINC RoHS	10-32NUT.iam	-



INTERPRET DRAWING PER ASME Y14.5M-1994
 DIMENSIONAL LIMITS APPLY
 AFTER APPLICATION OF FINISH
 DRAWING NOT TO SCALE
 TOLERANCE UNLESS OTHERWISE NOTED:
 ANGULAR +/- 1'
 .XXXX +/- .010
 .XXX +/- .015
 .XX +/- .030
 .X FOR REF. ONLY

NOTICE:
 Use of this document is subject to a confidentiality and nondisclosure agreement with Great Lakes Case & Cabinet Co., Inc. (GLCC) and may not be reproduced, disclosed or utilized in whole or in part without prior written authorization from GLCC.

PART NUMBER:
CBB60X200
 QTY PER UNIT: 1
 MATERIAL TYPE: -
 MATERIAL GAUGE: -
 FINISH: -
 DRAWN: JL DATE: 9/12/2005
 CHECKED & APP. DATE: 9-22-05
 WSS

TITLE
58.0"L x 1.0"W COPPER BUS BAR, TAPPED #10-32 - ASSEMBLY
GREAT LAKES CASE & CABINET CO., INC.
 P.O. BOX 551 EDINBORO, PA 16412
 PHONE (814) 734-7303 FAX (814) 734-3907
 E-MAIL glcc@greatcabinets.com

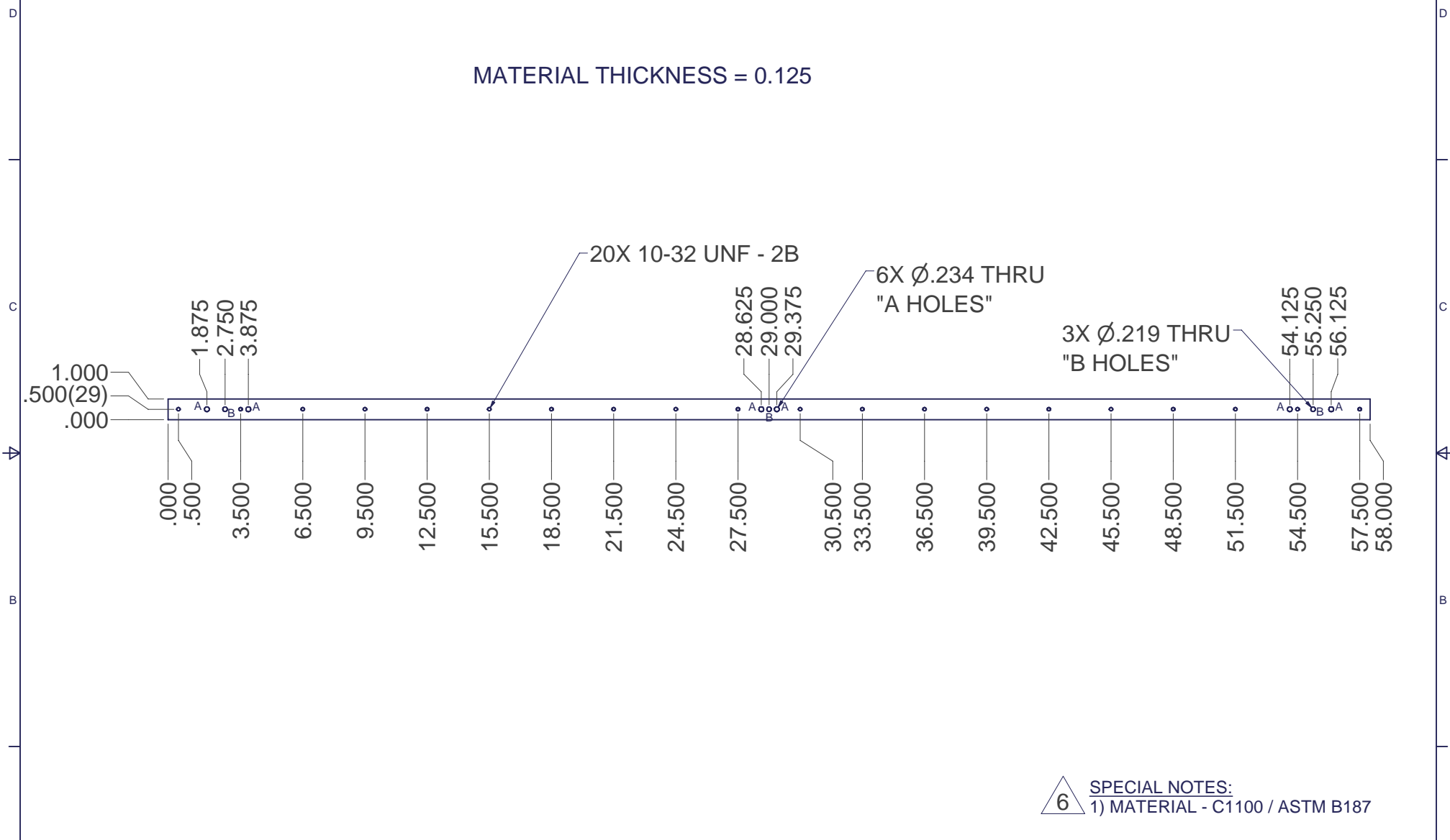


THIRD ANGLE PROJECTION
 UNLESS OTHERWISE SPECIFIED
 ALL DIMENSIONS ARE IN INCHES

DWG NO: **1003466** REV: **3** SHEET: 1 OF 1

REVISION HISTORY			
REV	DESCRIPTION	DATE	APPROVED
5	ECO-01636	9/22/2005	JL
6	ECO-02431	11/14/08	CD

MATERIAL THICKNESS = 0.125



6 SPECIAL NOTES:
1) MATERIAL - C1100 / ASTM B187



INTERPRET DRAWING PER ASME Y14.5M-1994 DIMENSIONAL LIMITS APPLY AFTER APPLICATION OF FINISH DRAWING NOT TO SCALE TOLERANCE UNLESS OTHERWISE NOTED: ANGULAR +/- 1° .XXXX +/- .010 .XXX +/- .015 .XX +/- .030 .X FOR REF. ONLY	UNLESS OTHERWISE SPECIFIED ALL DIMENSIONS ARE IN INCHES
---	--

NOTICE:
Use of this document is subject to a confidentiality and nondisclosure agreement with Great Lakes Case & Cabinet Co., Inc. (GLCC) and may not be reproduced, disclosed or utilized in whole or in part without prior written authorization from GLCC.

PART NUMBER: CBB60X100	DATE 9/12/2005
QTY PER UNIT: 1	DATE 9-22-05
MATERIAL TYPE: SEE NOTES	
MATERIAL GAUGE: .125 THICK	
FINISH: -	
DRAWN JL	CHECKED & APP. WSS

TITLE 58.00" L x 1.00" W COPPER BUS BAR, TAPPED #10-32 - DETAIL	DWG NO: 1003467	REV 6	SHEET: 1 OF 1
GREAT LAKES CASE & CABINET CO., INC. P.O. BOX 551 EDINBORO, PA 16412 PHONE (814) 734-7303 FAX (814) 734-3907 E-MAIL glcc@greatcabinets.com			