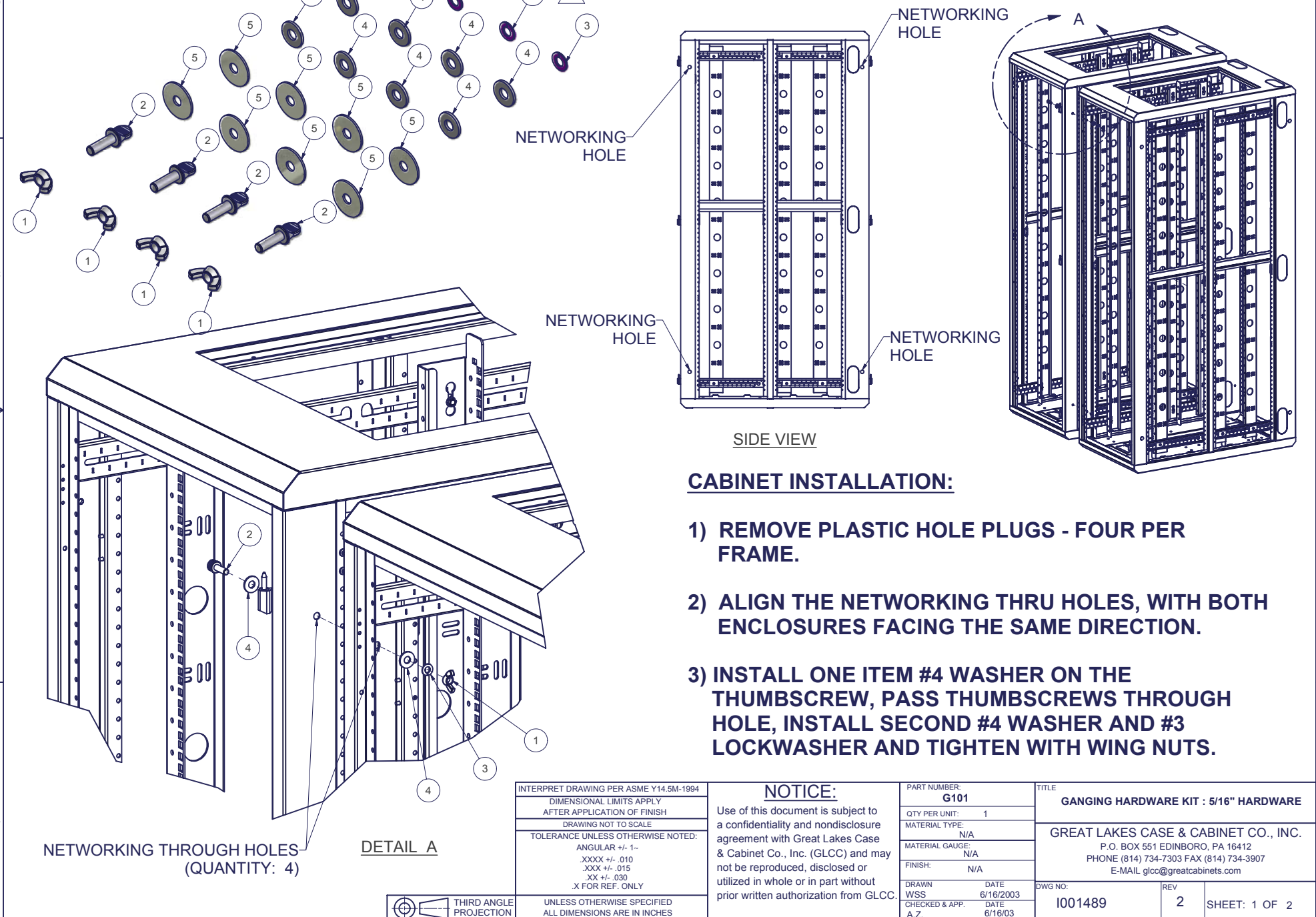


REVISION HISTORY			
REV	DESCRIPTION	DATE	APPROVED
0	ECO-01258	6/16/2003	JL
1	ECO-01908	4/4/2007	JL
2	ECO-02203	2/29/2008	JL

Bill of Material					
ITEM	PART NUMBER	QTY	DESCRIPTION	FILE NAME	REVISION
1	2ZN4042	4	5/16-18NC WING NUT, ZINC PLATED STL. (ILS)	2ZN4042.ipt	-
2	2ZN214543	4	5/16-18NC x 1"LG. THUMB SCREW, ZINC PLATED STL. (ILS)	2ZN214543.ipt	-
3	5/16SPLWSHR	4	WASHER, 5/16" SPLIT LOCK, ZINC PLATED	516SPLWSHR.ipt	-
4	516SFLWSHR	8	5/16" ZINC PLATED FLAT WASHER, .875" OD, .375" ID, .082" THICK	516SFLWSHR.ipt	-
5	516FENDERWSR	8	5/16" - 1-1/4"OD ZINC PLATED FENDER WASHER	516FENDERWSR.ipt	-



CABINET INSTALLATION:

- 1) REMOVE PLASTIC HOLE PLUGS - FOUR PER FRAME.
- 2) ALIGN THE NETWORKING THRU HOLES, WITH BOTH ENCLOSURES FACING THE SAME DIRECTION.
- 3) INSTALL ONE ITEM #4 WASHER ON THE THUMBSCREW, PASS THUMBSCREWS THROUGH HOLE, INSTALL SECOND #4 WASHER AND #3 LOCKWASHER AND TIGHTEN WITH WING NUTS.

INTERPRET DRAWING PER ASME Y14.5M-1994
DIMENSIONAL LIMITS APPLY AFTER APPLICATION OF FINISH
DRAWING NOT TO SCALE
TOLERANCE UNLESS OTHERWISE NOTED:
ANGULAR +/- 1-
.XXX +/- .010
.XXX +/- .015
.XX +/- .030
X FOR REF. ONLY
UNLESS OTHERWISE SPECIFIED ALL DIMENSIONS ARE IN INCHES

NOTICE:
Use of this document is subject to a confidentiality and nondisclosure agreement with Great Lakes Case & Cabinet Co., Inc. (GLCC) and may not be reproduced, disclosed or utilized in whole or in part without prior written authorization from GLCC.

PART NUMBER:	G101
QTY PER UNIT:	1
MATERIAL TYPE:	N/A
MATERIAL GAUGE:	N/A
FINISH:	N/A
DRAWN	DATE
WSS	6/16/2003
CHECKED & APP.	DATE
A.Z.	6/16/03

TITLE	GANGING HARDWARE KIT : 5/16" HARDWARE
GREAT LAKES CASE & CABINET CO., INC.	
P.O. BOX 551 EDINBORO, PA 16412	
PHONE (814) 734-7303 FAX (814) 734-3907	
E-MAIL glcc@greatcabinets.com	
DWG NO:	REV
1001489	2
SHEET: 1 OF 2	

