

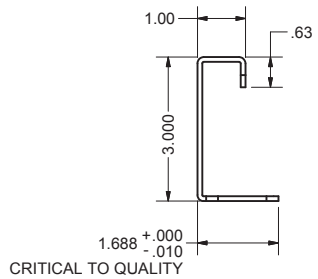
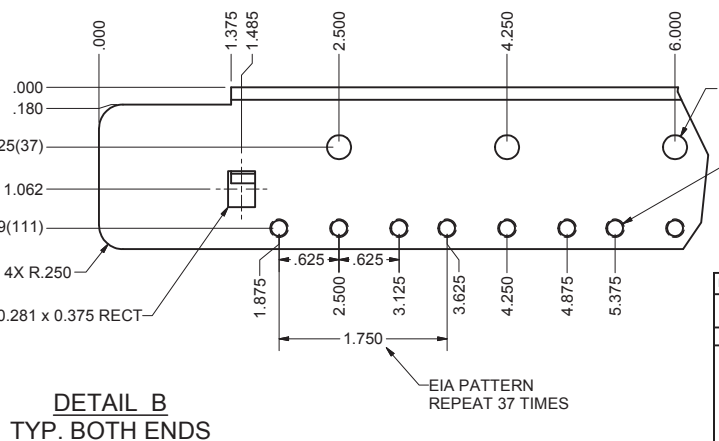
REVISION HISTORY			
REV	DESCRIPTION	DATE	APPROVED
3	ECO-01271	9/17/2003	WSS
4	ECO-01558	4/8/2005	JL

Bill of Material				FILE NAME	REV
ITEM	PART NUMBER	QTY	DESCRIPTION		
1	EPM-1870	1	77"x.312".007" POLYCARBONATE RU MARKER, 1-45, WHITE ON BLACK 9471 ADHESIVE, 3 STRIPS/SET	-	-

REAR FLANGE VIEW

MOUNTING FLANGE VIEW

**DETAIL A
TYP. BOTH ENDS**



INTERPRET DRAWING PER ASME Y14.5M-1994
DIMENSIONAL LIMITS APPLY AFTER APPLICATION OF FINISH
DRAWING NOT TO SCALE
TOLERANCE UNLESS OTHERWISE NOTED:
ANGULAR +/- 1
.XXX +/- .010
.XXX +/- .015
.XX +/- .030
X FOR REF. ONLY
UNLESS OTHERWISE SPECIFIED ALL DIMENSIONS ARE IN INCHES

NOTICE:

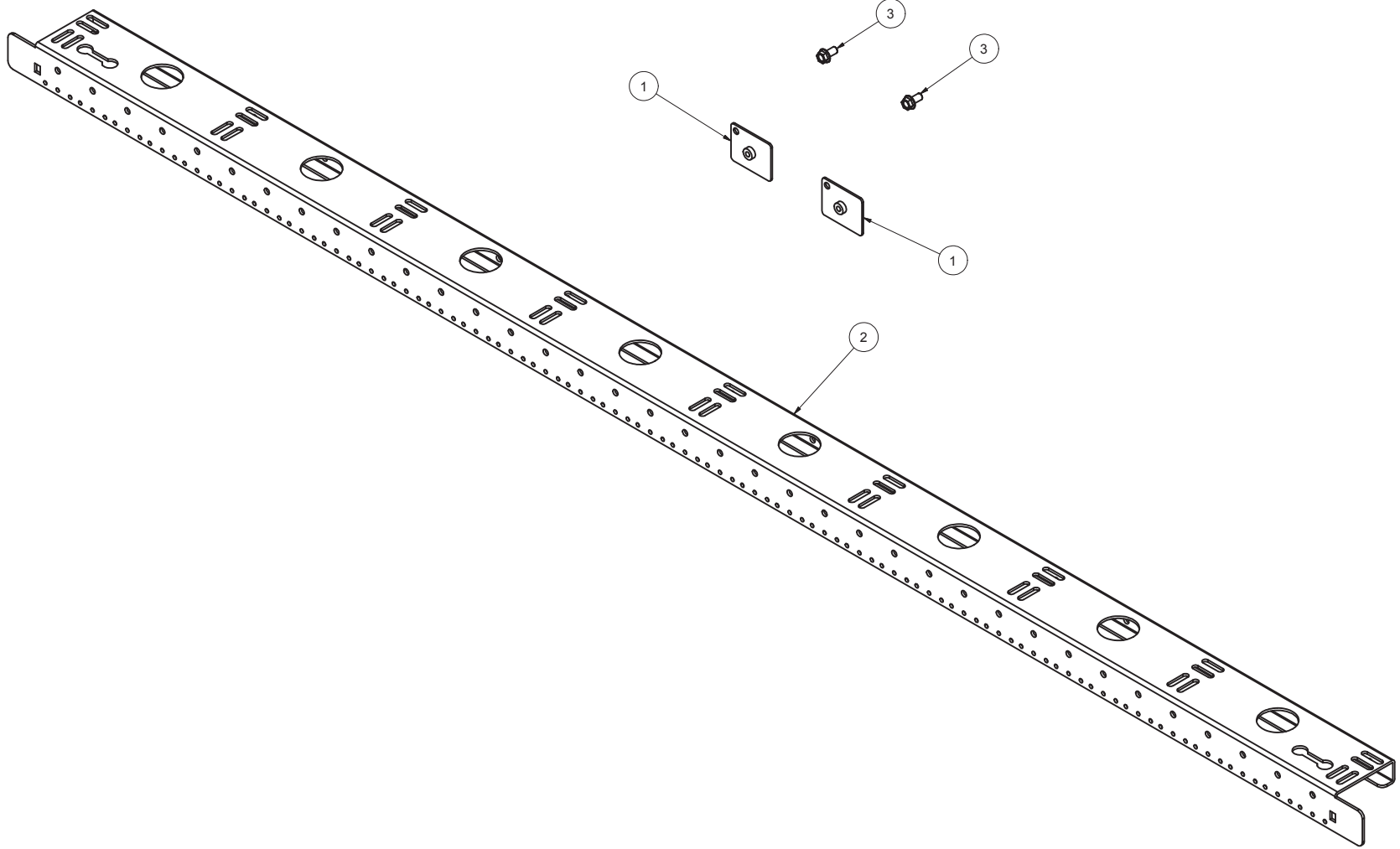
Use of this document is subject to a confidentiality and nondisclosure agreement with Great Lakes Case & Cabinet Co., Inc. (GLCC) and may not be reproduced, disclosed or utilized in whole or in part without prior written authorization from GLCC.

PART NUMBER:	7205ES1X100
QTY PER UNIT:	1
MATERIAL TYPE:	C.R.S.
MATERIAL GAUGE:	#12 GA.
FINISH:	SEE NOTES
DRAWN	DATE
WSS	9/16/2003
CHECKED & APP.	DATE
C.A.	9/18/03

TITLE	ENHANCED RAIL, FOR 72" HIGH ENCLOSURE, #10-32 TAPPED MOUNTING HOLES	
	GREAT LAKES CASE & CABINET CO., INC. P.O. BOX 551 EDINBORO, PA 16412 PHONE (814) 734-7303 FAX (814) 734-3907 E-MAIL glcc@greatcabinets.com	
DWG NO:	1000424	REV
		4
SHEET:	1 OF 1	

REVISION HISTORY			
REV	DESCRIPTION	DATE	APPROVED
2	ECO-01271	9/18/2003	WSS
3	ECO-01558	4/8/2005	JL

Bill of Material					
ITEM	PART NUMBER	QTY	DESCRIPTION	FILE NAME	REV
1	SN1X100	2	SLIDING NUT	I000018.iam	3
2	7205ES1X100	1	ENHANCED RAIL, FOR 72" HIGH ENCLOSURE, #10-32 TAPPED MOUNTING HOLES	I000424.ipt	4
3	1/420X1/2SC	2	1/4-20 X 1/2 LG. HEX HEAD BOLT w/LOCK FLANGE ZINC PL.	1420X12SC.ipt	-



INTERPRET DRAWING PER ASME Y14.5M-1994
 DIMENSIONAL LIMITS APPLY
 AFTER APPLICATION OF FINISH
 DRAWING NOT TO SCALE
 TOLERANCE UNLESS OTHERWISE NOTED:
 ANGULAR +/- 1
 .XXXX +/- .010
 .XXX +/- .015
 .XX +/- .030
 X FOR REF. ONLY
 UNLESS OTHERWISE SPECIFIED
 ALL DIMENSIONS ARE IN INCHES

NOTICE:
 Use of this document is subject to a confidentiality and nondisclosure agreement with Great Lakes Case & Cabinet Co., Inc. (GLCC) and may not be reproduced, disclosed or utilized in whole or in part without prior written authorization from GLCC.

PART NUMBER:
 7205ES1X200
 QTY PER UNIT: 1
 MATERIAL TYPE: N/A
 MATERIAL GAUGE: N/A
 FINISH: N/A
 DRAWN: SB
 CHECKED: 8-20-02

TITLE
EIA RAIL, TAPPED #10-32 FOR 72" E CABINETS, COMPLETE WITH HARDWARE
 GREAT LAKES CASE & CABINET CO., INC.
 P.O. BOX 551 EDINBORO, PA 16412
 PHONE (814) 734-7303 FAX (814) 734-3907
 E-MAIL glcc@greatcabinets.com
 DWG NO: I000598
 REV: 3
 SHEET 1 OF 1