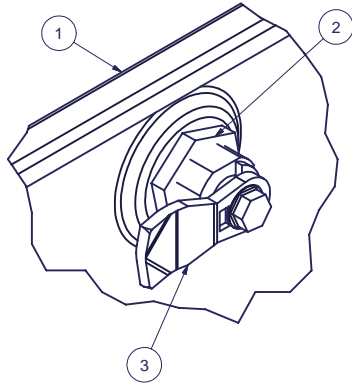
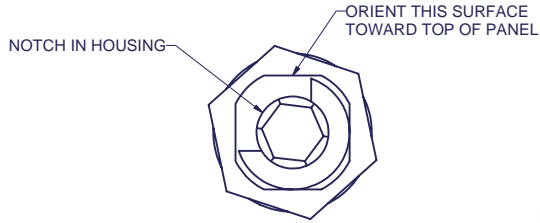


REVISION HISTORY			
REV	DESCRIPTION	DATE	APPROVED
0	ECO-01273	7/29/2003	CA
1	ECO-01681	12/28/2005	WSS

Bill of Material			DESCRIPTION	FILE NAME	REVISION
ITEM	PART NUMBER	QTY			
1		1	SIDE PANEL, SOLID, LIFTOFF, FOR 30"H x 32"D ENHANCED ENCLOSURE	1001575.iam	1
2	10117-32728	1	Austin Hardware 10117-32728 Black Die cast Lock	10117-32728.iam	-
3	2000614	1	CAM FOR SIDE PANELS	2000614.ipt	-

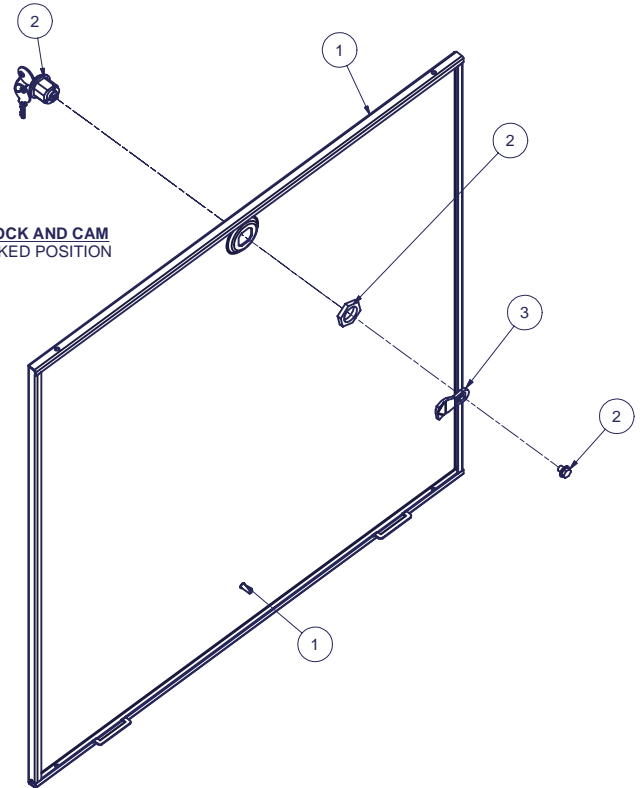


DETAIL A
ASSEMBLED VIEW OF LOCK AND CAM
CAM SHOWN IN UNLOCKED POSITION



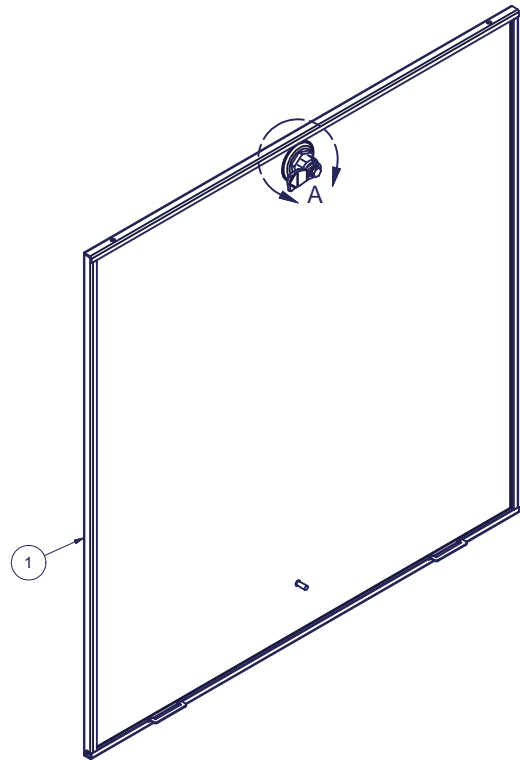
VIEW 3
AS VIEWED FROM INSIDE

EXPLODED VIEW OF LOCK AND CAM
CAM SHOWN IN UNLOCKED POSITION



LOCK AND CAM ASSEMBLY:

1. DO NOT REMOVE KEY FROM LOCK CYLINDER WHEN CYLINDER IS NOT IN THE LOCK HOUSING, LOCK MECHANISM WILL BE DESTROYED.
2. POSITION LOCK HOUSING AS SHOWN IN VIEW 3 - NOTE ORIENTATION OF NOTCH ON ITS INSIDE SURFACE AND THE ORIENTATION OF THE KEY IN CYLINDER.
3. SECURE LOCK HOUSING WITH NUT.
4. POSITION CAM AS SHOWN AND SECURE WITH SCREW.
5. TURN KEY TO VERIFY SMOOTH OPERATION OF LOCK.



SPECIAL NOTES:
1. REFER TO PURCHASE ORDER - SPECIAL INSTRUCTIONS MAY APPLY.

INTERPRET DRAWING PER ASME Y14.5M-1994
DIMENSIONAL LIMITS APPLY AFTER APPLICATION OF FINISH
DRAWING NOT TO SCALE
TOLERANCE UNLESS OTHERWISE NOTED:
ANGULAR +/- 1'
.XXXX +/- .010
.XXX +/- .015
.XX +/- .030
.X FOR REF. ONLY

NOTICE:

Use of this document is subject to a confidentiality and nondisclosure agreement with Great Lakes Case & Cabinet Co., Inc. (GLCC) and may not be reproduced, disclosed or utilized in whole or in part without prior written authorization from GLCC.

PART NUMBER:
3010321ELSX100
QTY PER UNIT: 1
MATERIAL TYPE: -
MATERIAL GAUGE: -
FINISH: -
DRAWN: WSS
DATE: 7/25/2003
CHECKED & APP. CA
DATE: 7-29-03

TITLE
SIDE PANEL, SOLID, LIFT-OFF, ASSEMBLY FOR 30H x 32D
GREAT LAKES CASE & CABINET CO., INC.
P.O. BOX 551 EDINBORO, PA 16412
PHONE (814) 734-7303 FAX (814) 734-3907
E-MAIL glcc@greatcabinets.com

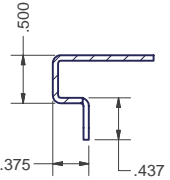
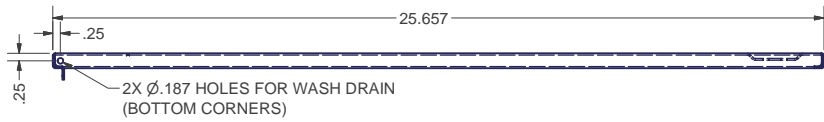


UNLESS OTHERWISE SPECIFIED ALL DIMENSIONS ARE IN INCHES

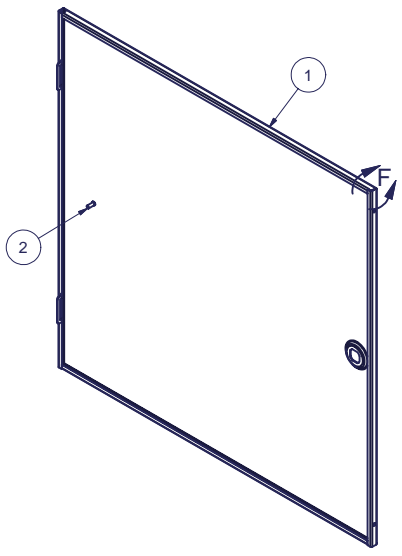
DWG NO: **1001574** REV: **1** SHEET: 1 OF 1

REVISION HISTORY			
REV	DESCRIPTION	DATE	APPROVED
0	ECO-01273	7/28/2003	WSS
1	ECO-01681	12/28/2005	WSS

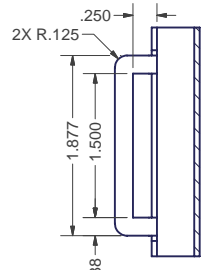
Bill of Material			DESCRIPTION	FILE NAME	REVISION
ITEM	PART NUMBER	QTY			
1		1	SIDE PANEL, SOLID, LIFTOFF, FOR 30H x 32D E CABINET	1001575.ipt	1
2	101208260	1	#10-32 x 1/2" L WELD STUD (NELSON)	101208260.ipt	-



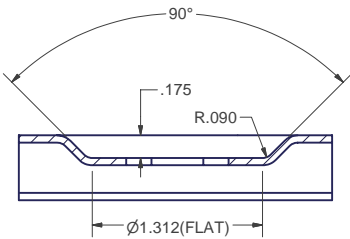
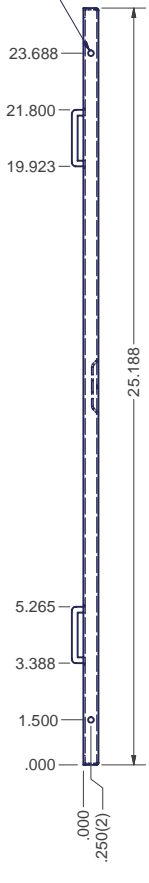
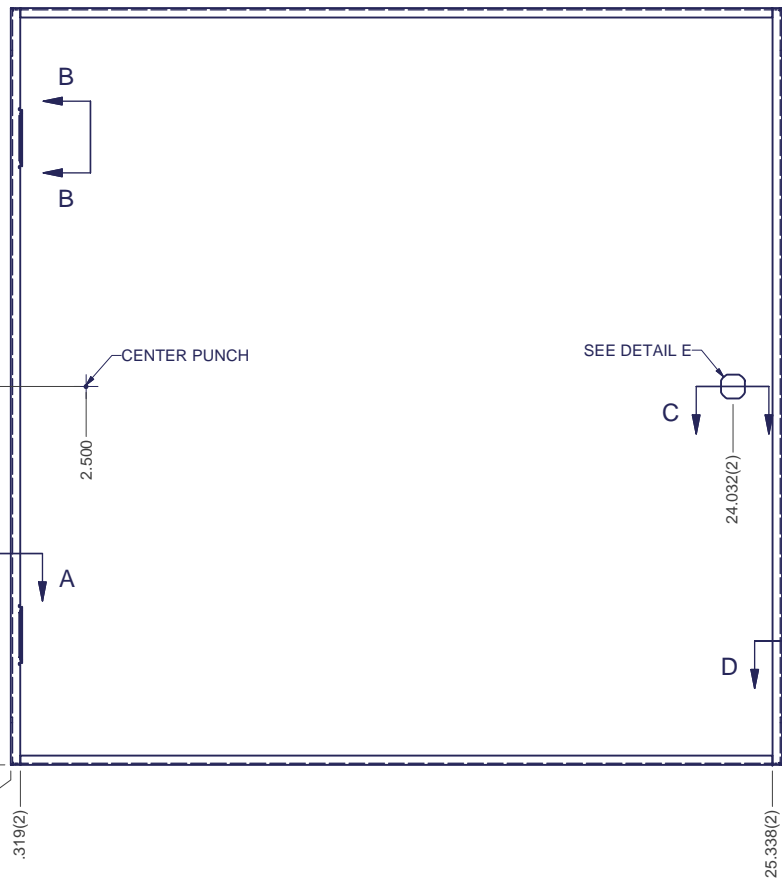
SECTION A-A
TYP BOTH TABS



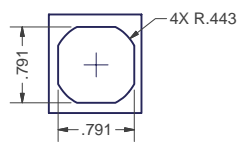
1 4X Ø.187 ∇ .056
(HANG HOLES)



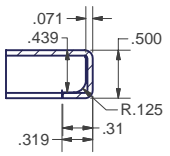
SECTION B-B
TYP BOTH TABS



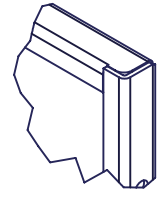
SECTION C-C



DETAIL E



SECTION D-D
TYP 4 CORNERS



DETAIL F
TYP 4 CORNERS

SPECIAL NOTES:

1. PREPARE THREADS PRIOR TO AND DURING WELDING PER: TD-09-109
2. FINISH PER TD-09-103 (POWDER COAT), CLASS B, TEXTURE LEVEL 3, - ALL SURFACES UNLESS OTHERWISE NOTED.
MASK OFF GROUND STUD PRIOR TO COATING.
3. DIMENSIONS APPLY BEFORE APPLICATION OF FINISH: ADD .005" TO EACH SURFACE FOR INSPECTION.
4. INSTALL WELD STUD ON CENTER PUNCH.
5. TYPICAL BEND RADIUS = 0.030



INTERPRET DRAWING PER ASME Y14.5M-1994
DIMENSIONAL LIMITS APPLY AFTER APPLICATION OF FINISH
DRAWING NOT TO SCALE
TOLERANCE UNLESS OTHERWISE NOTED:
ANGULAR +/- 1°
.XXXX +/- .010
.XXX +/- .015
.XX +/- .030
.X FOR REF. ONLY
UNLESS OTHERWISE SPECIFIED ALL DIMENSIONS ARE IN INCHES

NOTICE:

Use of this document is subject to a confidentiality and nondisclosure agreement with Great Lakes Case & Cabinet Co., Inc. (GLCC) and may not be reproduced, disclosed or utilized in whole or in part without prior written authorization from GLCC.

PART NUMBER:	
QTY PER UNIT:	1
MATERIAL TYPE:	C.R.S.
MATERIAL GAUGE:	#16 GA.
FINISH:	SEE NOTES
DRAWN:	DATE
CA	7/25/2003
CHECKED & APP.	DATE
A.L.	7/22/03

TITLE	SIDE PANEL, SOLID, LIFTOFF, FOR 30H x 32D E CABINET		
	GREAT LAKES CASE & CABINET CO., INC.		
	P.O. BOX 551 EDINBORO, PA 16412		
	PHONE (814) 734-7303 FAX (814) 734-3907		
	E-MAIL glcc@greatcabinets.com		
DWG NO:	1001575	REV	1
			SHEET: 1 OF 1