



TELCOM  **data**
Improving **Your Business** Through Telcom

Public Address - Voice Alarm
Audio Distribution over IP
Commercial Audio
Loudspeakers



IDA8

Highly Integrated Network PA/VA System

DELIVERING YOUR MESSAGE

ATEİS proudly introduces a highly integrated PA/VA system which is complied with EN54-16 and UL60065 requirements. The system features emergency messaging, paging, audio streaming, priority control, VoIP, 3rd party control, message playing & recording etc..

The IDA8 system is a fully digital and networked PA/VA system with adjustable DSP parameters within the digital domain. The IDA8C controller consists of 2 modular I/O card-slot with 8 in, 8 out, 4 in x 4 out for the use in any installation size, whether is a small local system of 256 zones or a big complex multi-zone and multi-input system of 8,192 zones. All these functions are presented within the main matrix to ensure high quality of audio production required at different ambient environment and large sites.

IDA8C controller supports up to 48 simultaneous audio channels per local network, and is equipped with four remote ports for paging consoles, nine monitored EVAC inputs, eight contact outputs, a fault & a EVAC relay output, and is capable of connecting up to eight monitored amplifiers and two backup amplifiers. Each speaker line is with A/B zone line detection according to BS 5839 part 8. In addition, the IDA8C is capable to monitor and log the status of all the device components in the system.

The ATEİS local & global network supports redundant loop cabling, back-up amplifier switching/sharing, system unit back-up redundancy in case of the controller or amplifier breaks down. All these features provide the most high level of full-redundancy and offers a complete real-time monitoring to ensure a secured installation. Ethernet communications shall be utilized for software control, configuration and audio distribution.

The system supports flexible use of network cards - CAT5/6 -100m or fiber-optic (multi mode-2 km and single mode-20 km). Each system application shall feature a fully redundant network configuration with less than 0.02 ms latency between units.

PROCESSORS & SLAVE UNITS



IDA8C
Networkable Controller
Matrix Mode



IDA8SL
Networkable Lo-Z Slave Unit
Matrix Mode



IDA8S
Networkable Slave Unit
Matrix Mode



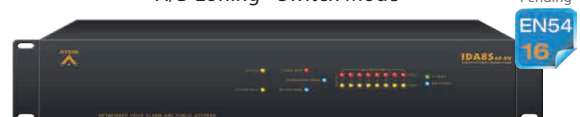
IDA8C-SW
Networkable Controller
Switch Mode



IDA8SAB
Networkable Slave Unit
A/B-zoning - Matrix Mode



IDA8SAB-SW
Networkable Slave Unit
A/B-zoning - Switch Mode



PAGING CONSOLES & ACCESSORIES

PSS-AS
Colour Touch Screen
Paging Console



PPM-AS
Desktop
Paging Console



CD-TOUCHAS
Wall-Mount
Touch Screen Paging Console



CD-8AS/CD-16AS
Wall-Mount
8/16 Buttons Paging Console



URC-150AS Programmable Remote Controller
URC-200AS Programmable Remote Controller (Ethernet)



DNM-485 Noise Sensing Microphone (RS485)
DNM-ENET Noise Sensing Microphone (Ethernet)



DIALER-DP Wired Touch Dialpad
DIALER-DPWL Wireless Dialpad with Transceiver



AMPLIFIERS & BATTERY CHARGERS



SPA SPA2060/SPA2120/SPA2240
Security Power Amplifier, 24VDC Backup



SONAES
Charger and Monitored Unit



BPA-1240
Bridging Power Amplifier ClassAB 240W x 1CH

BPA-1480
Bridging Power Amplifier ClassAB 480W x 1CH

BPA-2060
Bridging Power Amplifier ClassAB 60W x 2CH

BPA-2120
Bridging Power Amplifier ClassAB 120W x 2CH

BPA-2240
Bridging Power Amplifier ClassAB 240W x 2CH

BPA-2480
Bridging Power Amplifier ClassAB 480W x 2CH

BPA-1000
Bridging Power Amplifier ClassAB 1000W x 1CH



DPA8060
60W x 8 Digital Power Amplifier

DPA4125
125W x 4 Digital Power Amplifier

DPA4250
250W x 4 Digital Power Amplifier

DPA2500
500W x 2 Digital Power Amplifier



BCU-4830A
Advanced Monitored Battery Charger
3amp/30amp

BCU-4875A
Advanced Monitored Battery Charger
6amp/75amp

REDUNDANCY SWITCHING UNITS

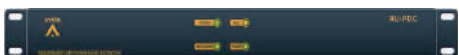
**RU-MAIN**

Switching unit for digital audio processing with paging console interface



RU-CTL

Switching unit for secured input and normal contact output

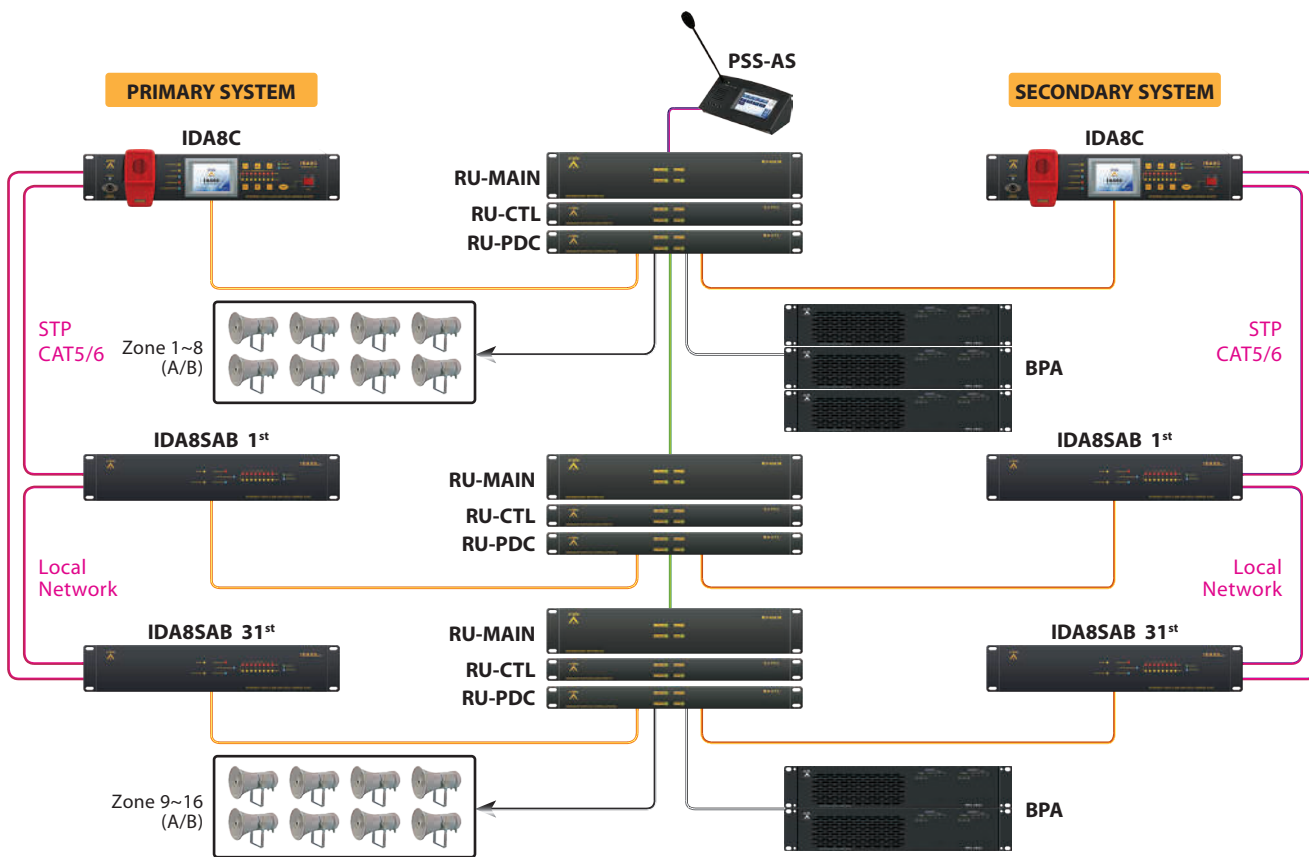


RU-PDC

Switching unit with in/out contacts,
paging console & telephone line interface

The IDA8 RU series are designed to provide the reliability of high level of full-redundancy and offer a complete real-time monitoring. The RU-MAIN is in charge of auto switching to primary/secondary devices and re-operate for IDA8C controller and IDA8SAB slave units.

FULL-REDUNDANCY CONFIGURATION



Full support for 100% redundancy and use of watchdog services guarantees the maximum system availability with immediate switchover of primary to secondary not only by means of active spare amplifiers but also the control equipment. Should any main equipment fails, there's an automatic switchover to the redundant system to ensure uninterrupted operation.



INTEGRATED OPERATION SOFTWARE

ATEiS Studio software is a graphic user interface designed for intuitive system setup and programming. The PC-based software allows hardware updating, full system configuration including flexible device topology, DSP adjustments, events, schedulers, presets control and real-time monitoring.

GRAPHICAL USER INTERFACE

ATEİS Studio allows complete PA/VA or audio systems incorporating a range of devices to be configured, monitored and controlled centrally from a single user interface. ATEİS Studio supports all IP-based products within the ATEİS product family such as IDA8 PA/VA system, LAP-G2T and ECS audio system. The software enables a comprehensive overview of the system and its virtual connections and also offers control and device configuration for IDA8 controllers and slave units, paging consoles and remotes such as PSS-AS, CD-16AS and URC-150AS devices.

DIAGNOSING

ATEiS Studio monitors, controls, logs and reports a range of events. The whole system configuration preset can be stored and reloaded at the press of a button. Users can tailor design the elements of the graphic user interface or control panels, as well as program the schedulers and events and create different user levels for security and management.

BUILDING

ATEiS Studio provides a complete set of tools and building blocks for real-time control and monitoring. Detailed information such as signal levels, loudspeaker impedance, pre-recorded messages, amplifier conditions and other parameters can be monitored in real-time.

A comprehensive library of tools, control and monitoring elements is provided along with the GUI, including items such as volume control faders, metering, high-level EQ, compression, limiting, auto-gain, noise sensing, mixing, shortcut buttons and display elements. Element behavior can be fully tailored to suit each application. Built-in file transfer software transfers both data and audio files from the PC to the network controller.

ACCESS LEVELS

Additional security can be added to the software with password-protected layers according to EN54-16. Multiple users can be created and assigned, each with a unique password and access to specific layers of the GUI.

DRAG & DROP

To design the system configuration including hardware connection, signal paths for each device, DSP components etc., simply Drag & Drop and items/components into the design window, providing easy-to-use and real-time modification.

FEATURES

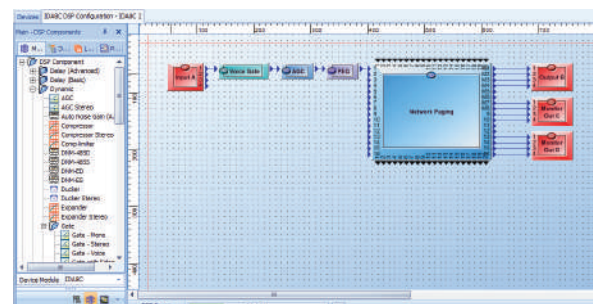
- Runs on Windows
- Assignable access levels with rights management
- All system and unit parameters can be configured
- Easy navigation
- Drag & drop features
- Real-time monitored

DIAGNOSTIC AND LOGGING SOFTWARE

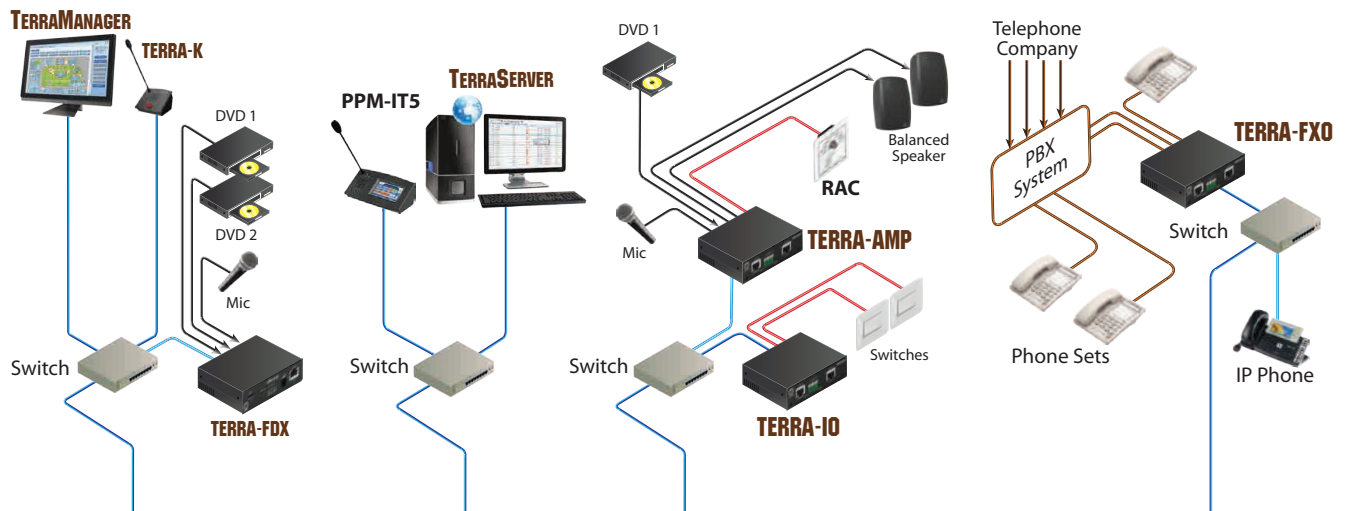
- Call, fault and general event logging
- On-line logging function
- Historical logging
- Event display priority can be changed
- Password-protected

FILE TRANSFER SOFTWARE

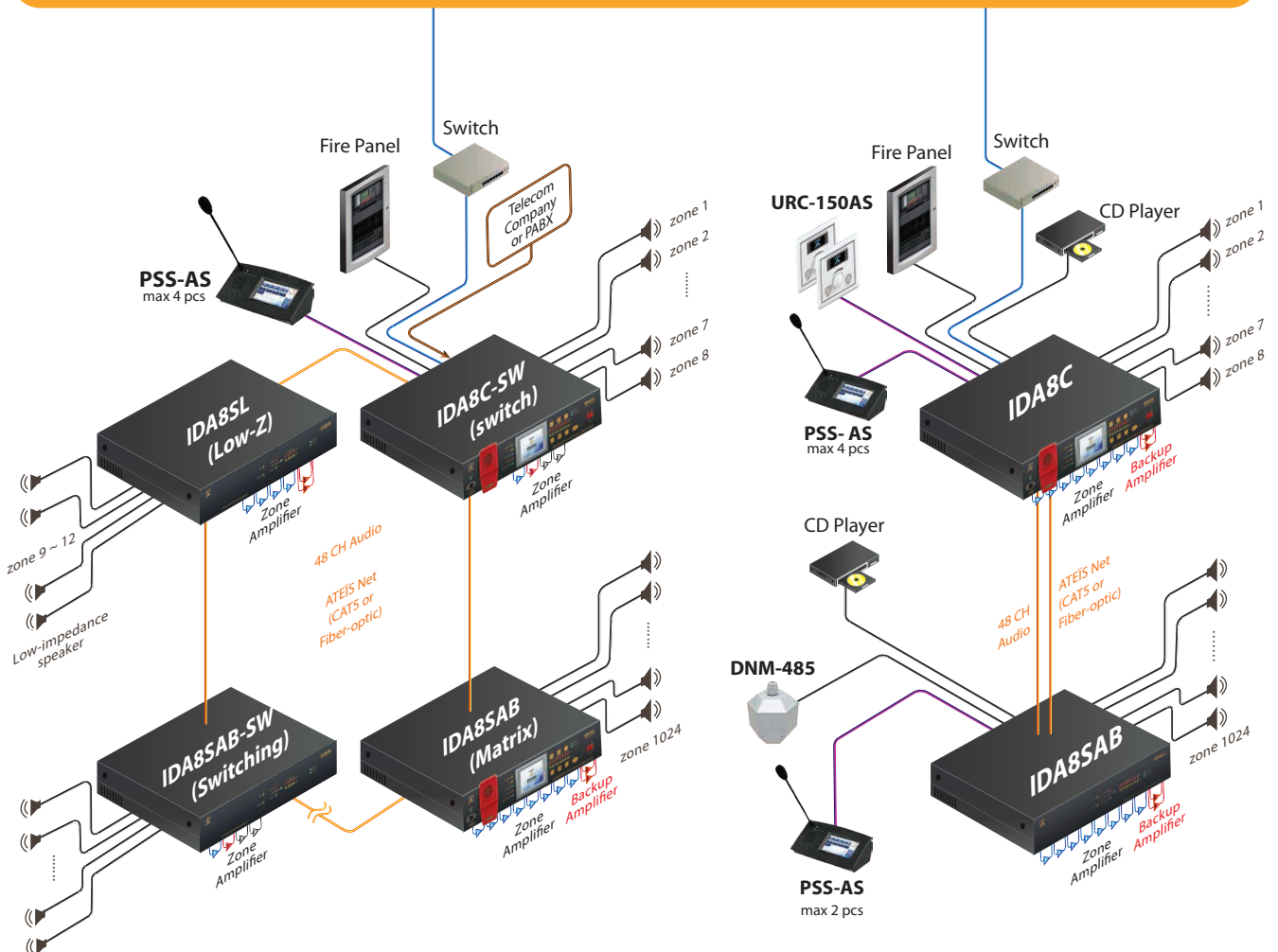
- PC-based application
- Supplied together with the network controller
- Creation of message sets
- Off-line configuration



SYSTEM DIAGRAM



IP Network over Ethernet & Internet (64K bits per call or 128 bits per stream)



PROJECT REFERENCES

FRANCE

- Rolland Garros stadium, Paris
- Air France Roissy Headquarter, Paris
- Stade de France, Paris
- St Exupery Airport, Lyon
- Department Hall, Marseille
- Pharo Cultural Center, Marseille
- Communal Headquarter, Marseille
- Borely Hippodrome, Marseille
- Congress Hall, Dijon
- Beaubourg Museum, Paris
- Nice Côte Sud Airport, Nice
- Bir Hakeim Station Subway, Paris
- Gennevilliers Station Subway, Paris
- Lyon Part Dieu Railway Station, Lyon
- Paris Nord Railway Station, Paris
- Opéra Bastille, Paris
- Futuroscope, Poitiers
- Mérignac Airport, Bordeaux

GERMANY

- U-Bahn Nürnberg Railway
- Frankfurt Airport
- Signal Iduna Park Stadium
- Dortmund Stadium

MIDDLE EAST

- The Burj Al Arab Hotel, Dubai
- Jumeirah Beach Hotel, Dubai
- Capital Plaza, Dubai
- Business Bay, Dubai
- Dubai Metro
- Marsa Plaza, Dubai
- Festival City Mall, Dubai

NETHERLANDS

- Central Railway Station, Amsterdam
- The Hague Central Station
- Randstad Railway
- Jaarbeurs Exhibition Center
- Randstad Railway, Central-Western Netherlands
- Offshore Oil & Gas Platforms

SWITZERLAND

- Railway Station, Zürich
- Palexpo, Geneva
- Zürich Airport

UK

- City Airport, London
- Kings Cross Station, London
- Brit Oval Stadium, South London
- Falmer Stadium, Brighton
- Liverpool Cathedral
- St Pancras Railway Station
- Reading Station
- Heathrow Express
- ExCel Exhibition Centre, London
- Eden Project, Cornwall

USA

- U.S. Government and Military
- U.S. Department of State, Washington, DC
- U.S. Department of Energy, Washington, DC
- U.S. Department of Labor, GA
- U.S. Army Fort Hood, TX
- U.S. Army Airborne School, Fort Benning, GA
- Vandenberg Air Force Base, Lompoc, CA
- Otis Air National Guard Base, MA
- Southeast Louisiana Veterans Health Care System, New Orleans, LA
- Bay Area Rapid Transit (BART), Northern CA

APPLICATIONS



**U.S.
GOVERNMENT**



**U.S. ARMY
FORT HOOD**



**DUBAI
METRO**



**ZÜRICH
RAILWAY STATION**



**U.S.
DEPARTMENT OF STATE**



**STADE DE FRANCE
PARIS**



**BURJ AL ARAB HOTEL
DUBAI**



**SIGNAL IDUNA PARK
GERMANY**



**U.S. ARMY
FT. BENNING**



**EUROPEAN PARLIAMENT
BELGIUM**



**CENTRAL STATION
AMSTERDAM**

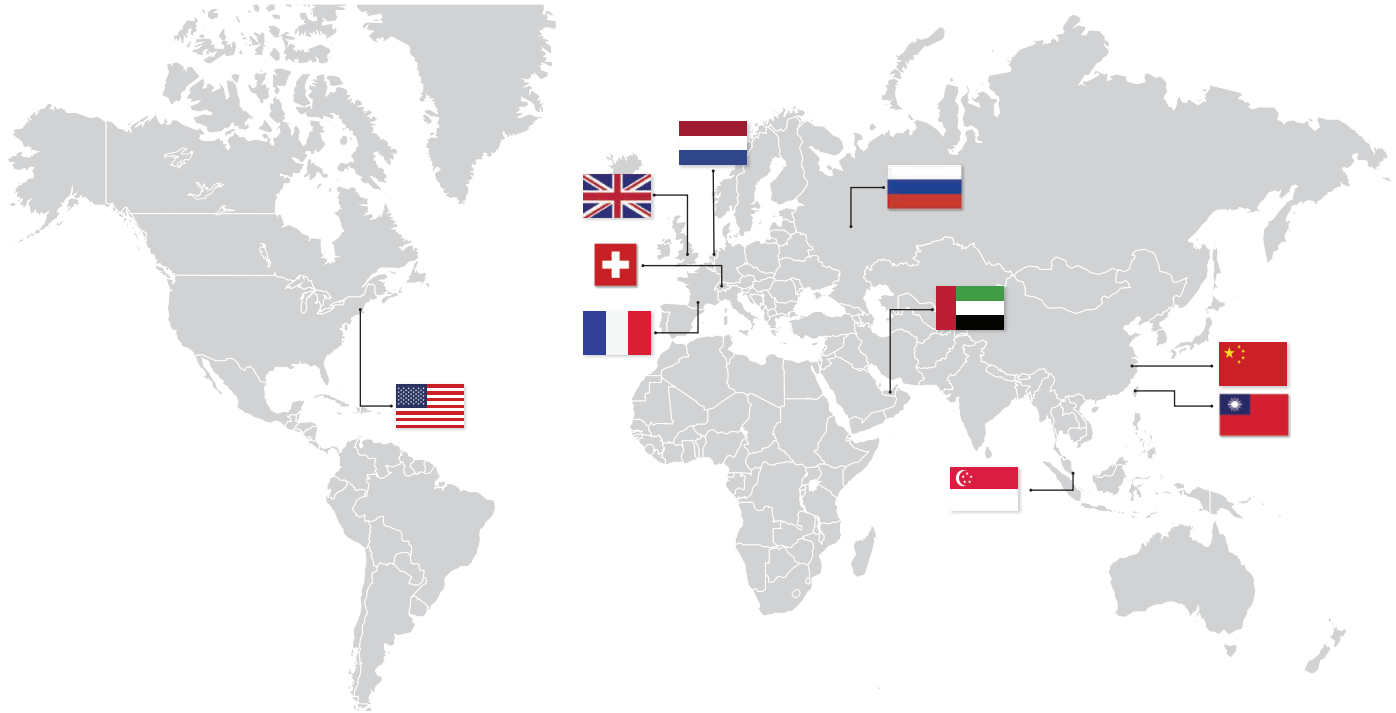


**HEATHROW AIRPORT
LONDON**



IDA8

Highly Integrated Network PA/VA System



TELCOM  **data**
Improving **Your Business** Through Telcom

TO ORDER CALL

800-335-0229

www.telcom-data.com